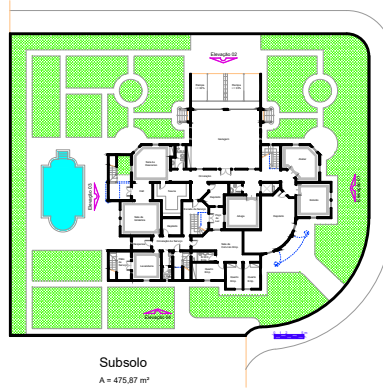
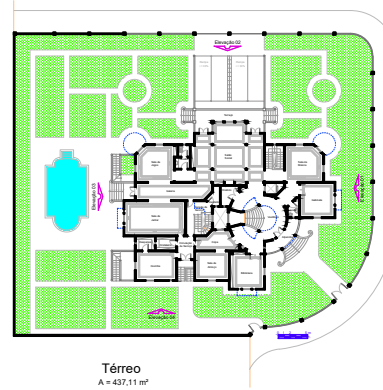


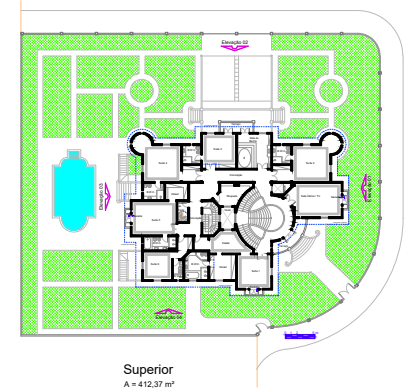
Implantação e Cobertura



Subsolo  
A = 475,87 m<sup>2</sup>



Térreo  
A = 437,11 m<sup>2</sup>

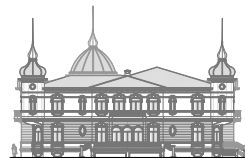


Superior  
A = 412,37 m<sup>2</sup>

Área Total = 1282,45 m<sup>2</sup>



Elevação 01



Elevação 02



Elevação 03



Elevação 04